

Acta Crystallographica Section E

Structure Reports

Online

ISSN 1600-5368

***N*-(2-Furoyl)-*N'*-(2-pyridyl)thiourea**O. Estévez-Hernández,^{a*} J. Duque,^a H. Pérez,^b S. Santos Jr^c and Y. Mascarenhas^d

^aLaboratory of Molecular Engineering, Institute of Materials (IMRE), University of Havana, Cuba, ^bDepartamento de Química Inorgánica, Facultad de Química, Universidad de La Habana, Cuba, ^cLaboratório de Física, Universidade Federal do Tocantins, Palmas, Tocantins, Brazil, and ^dInstituto de Física de São Carlos, Universidade de São Paulo, São Carlos, Brazil
Correspondence e-mail: osvaldo@imre.oc.uh.cu

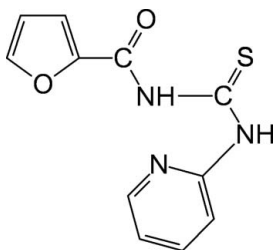
Received 16 March 2009; accepted 26 March 2009

Key indicators: single-crystal X-ray study; $T = 150$ K; mean $\sigma(\text{C}-\text{C}) = 0.003$ Å; R factor = 0.042; wR factor = 0.122; data-to-parameter ratio = 13.4.

The title compound, $\text{C}_{11}\text{H}_9\text{N}_3\text{O}_2\text{S}$, crystallizes with two independent molecules in the asymmetric unit. The central thiourea core makes dihedral angles of -3.3 (3) and 0.6 (3)° with the furan carbonyl groups in each molecule, whereas the pyridine ring is inclined by 4.63 (2) and 11.28 (7)°, respectively. The *trans*-*cis* geometry of the thiourea fragment is stabilized by an intramolecular $\text{N}-\text{H}\cdots\text{N}$ hydrogen bond between the H atom of the *cis*-thioamide group and the pyridine N atom. In the crystal structure, intermolecular bifurcated $\text{N}-\text{H}\cdots\text{S}$ and $\text{N}-\text{H}\cdots\text{O}$ hydrogen bonds form centrosymmetric tetramers extending along the *b* axis.

Related literature

For general background, see: Aly *et al.* (2007); Su *et al.* (2006). For related structures, see: Duque *et al.* (2008); Corrêa *et al.* (2008); Theodoro *et al.* (2008); Valdés-Martínez *et al.* (2002); Koch (2001); Pérez *et al.* (2008). For the synthesis, see: Otazo-Sánchez *et al.* (2001).



Experimental

Crystal data

$\text{C}_{11}\text{H}_9\text{N}_3\text{O}_2\text{S}$
 $M_r = 247.27$
Monoclinic, $P2_1/c$
 $a = 6.9510$ (1) Å

$b = 15.7000$ (4) Å
 $c = 20.2700$ (6) Å
 $\beta = 90.284$ (2)°
 $V = 2212.05$ (9) Å³

$Z = 8$
Mo $K\alpha$ radiation
 $\mu = 0.29$ mm⁻¹

$T = 150$ K
 $0.12 \times 0.08 \times 0.06$ mm

Data collection

Enraf-Nonius KappaCCD diffractometer
Absorption correction: none
22281 measured reflections

4337 independent reflections
3574 reflections with $I > 2\sigma(I)$
 $R_{\text{int}} = 0.060$

Refinement

$R[F^2 > 2\sigma(F^2)] = 0.042$
 $wR(F^2) = 0.122$
 $S = 1.10$
4337 reflections
323 parameters

H atoms treated by a mixture of independent and constrained refinement
 $\Delta\rho_{\text{max}} = 0.45$ e Å⁻³
 $\Delta\rho_{\text{min}} = -0.46$ e Å⁻³

Table 1
Hydrogen-bond geometry (Å, °).

| $D-\text{H}\cdots A$ | $D-\text{H}$ | $\text{H}\cdots A$ | $D\cdots A$ | $D-\text{H}\cdots A$ |
|---|--------------|--------------------|-------------|----------------------|
| $\text{N1}-\text{H1}\cdots\text{O2}$ | 0.89 (2) | 2.23 (2) | 2.653 (2) | 109.3 (18) |
| $\text{N1}-\text{H1}\cdots\text{N3}$ | 0.89 (2) | 1.84 (2) | 2.612 (2) | 145 (2) |
| $\text{N1A}-\text{H1A}\cdots\text{O2A}$ | 0.87 (2) | 2.22 (2) | 2.661 (2) | 111.6 (18) |
| $\text{N1A}-\text{H1A}\cdots\text{N3A}$ | 0.87 (2) | 1.90 (2) | 2.632 (2) | 141 (2) |
| $\text{N2}-\text{H2}\cdots\text{O1A}^i$ | 0.84 (3) | 2.13 (2) | 2.940 (2) | 162 (2) |
| $\text{N2A}-\text{H2A}\cdots\text{S1A}^i$ | 0.86 (2) | 2.51 (2) | 3.3530 (15) | 170 (2) |

Symmetry code: (i) $-x + 1, -y + 1, -z$.

Data collection: *COLLECT* (Nonius, 2000); cell refinement: *SCALEPACK* (Otwinowski & Minor, 1997); data reduction: *DENZO* (Otwinowski & Minor, 1997) and *SCALEPACK*; program(s) used to solve structure: *SHELXS97* (Sheldrick, 2008); program(s) used to refine structure: *SHELXL97* (Sheldrick, 2008); molecular graphics: *ORTEP-3 for Windows* (Farrugia, 1997) and *Mercury* (Macrae *et al.*, 2006); software used to prepare material for publication: *WinGX* (Farrugia, 1999).

The authors acknowledge financial support from the Brazilian agency CNPq. OE-H thanks CONACyT of Mexico for research grant No. 61541.

Supplementary data and figures for this paper are available from the IUCr electronic archives (Reference: NG2563).

References

- Aly, A. A., Ahmed, E. K., El-Mokadem, K. M. & Hegazy, M. E. F. (2007). *J. Sulfur Chem.* **28**, 73–93.
Corrêa, R. S., Estévez-Hernández, O., Ellena, J. & Duque, J. (2008). *Acta Cryst.* **E64**, o1414.
Duque, J., Estévez-Hernández, O., Mascarenhas, Y., Ellena, J. & Corrêa, R. S. (2008). *Acta Cryst.* **E64**, o1457.
Farrugia, L. J. (1997). *J. Appl. Cryst.* **30**, 565.
Farrugia, L. J. (1999). *J. Appl. Cryst.* **32**, 837–838.
Koch, K. R. (2001). *Coord. Chem. Rev.* **216–217**, 473–488.
Macrae, C. F., Edgington, P. R., McCabe, P., Pidcock, E., Shields, G. P., Taylor, R., Towler, M. & van de Streek, J. (2006). *J. Appl. Cryst.* **39**, 453–457.
Nonius (2000). *COLLECT*. Nonius BV, Delft, The Netherlands.
Otazo-Sánchez, E., Pérez-Marín, L., Estévez-Hernández, O., Rojas-Lima, S. & Alonso-Chamarro, J. (2001). *J. Chem. Soc. Perkin Trans. 2*, pp. 2211–2218.
Otwinowski, Z. & Minor, W. (1997). *Methods in Enzymology*, Vol. 276, *Macromolecular Crystallography*, Part A, edited by C. W. Carter Jr & R. M. Sweet, pp. 307–326. New York: Academic Press.
Pérez, H., Mascarenhas, Y., Estévez-Hernández, O., Santos, S. Jr & Duque, J. (2008). *Acta Cryst.* **E64**, o513.

Sheldrick, G. M. (2008). *Acta Cryst.* **A64**, 112–122.

Su, B. Q., Liu, G. L. & Sheng, L. (2006). *Phosphorus Sulfur Silicon Relat. Elem.* **181**, 745–750.

Theodoro, J. E., Mascarenhas, Y., Ellena, J., Estévez-Hernández, O. & Duque, J. (2008). *Acta Cryst.* **E64**, o1193.

Valdés-Martínez, J., Hernández-Ortega, S., Espinosa-Pérez, G., Presto, C., Haslow, K. D., Ackerman, L. J., Szczepura, L. F., Goldberg, K. I., Kaminsky, W. & West, D. X. (2002). *J. Mol. Struct.* **608**, 77–87.

supplementary materials

Acta Cryst. (2009). E65, o929-o930 [doi:10.1107/S1600536809011301]

N-(2-Furoyl)-*N'*-(2-pyridyl)thiourea

O. Estévez-Hernández, J. Duque, H. Pérez, S. Santos Jr and Y. Mascarenhas

Comment

The importance of aroylthioureas is found largely in heterocyclic syntheses and many of these substrates have interesting biological activities (Aly *et al.*, 2007). Aroylthioureas have also attracted much attention because of their unique properties, such as the strong coordination ability (Su *et al.*, 2006). The title compound (I), Fig. 1, was synthesized from furoyl isothiocyanate and 2-aminopyridine in dry acetone. Studies of a number of substituted thioureas, including *N*-furoylthioureas, show intramolecular hydrogen bonding between N'H and the furoyl oxygen (Duque *et al.*, 2008; Theodoro *et al.*, 2008; Corrêa *et al.*, 2008). There is also an intermolecular NH hydrogen bond with a sulfur of a neighboring molecule to form a two-dimensional network in these latter thioureas. The molecule structure of the title compound is shown in Figure 1. This thiourea derivative, like other pyridyl thioureas, is found in a conformation resulting from intramolecular hydrogen bonding of N2H(N'H) to the pyridine nitrogen, N3, and *cis-cis* like *N*-phenyl- *N'*-(2-pyridyl)thiourea derivatives (Valdés-Martínez *et al.*, 2002). The title compound crystallizes in the thioamide form with two independent molecules in the asymmetric unit. The main bond lengths are within the ranges obtained for similar compounds (Koch *et al.*, 2001 and Pérez *et al.* 2008). The C2—S1 and C1—O1 bonds (Table 1) both show the expected double-bond character. The short values of the C2—N1, C2—N2 and C1—N2 bonds indicate partial double bond character. These results can be explained by the existence of resonance in this part of the molecule. The C=S distance for compound I (two unique molecules) averages 1.667 (2) Å. The furan carbonyl (O1—C1—C3—O2 and O1a—C1a—C3a—O2a, two unique molecules) groups are inclined at an angle of -3.3 (3) ° and 0.6 (3) ° with respect to the plane formed by the thiourea moiety, whereas the 2-pyridyl (C7—C8—C9—C10—C11 and C7a—C8a—C9a—C10a—C11a, two unique molecules) rings are inclined at an angle of -3.3 (3) ° and 0.6 (3) °, respectively. In addition, the dihedral angles of two independent molecules between the furoyl groups and pyridine ring planes are 85.1 (2)° and 82.96 (8) °, respectively. The *trans-cis* geometry in the thiourea moiety is stabilized by the N1—H1...N3 intramolecular hydrogen bond. Another weaker bifurcated intramolecular hydrogen interaction between the furan oxygen atom O2 and the N1—H1 hydrogen atom is observed. The crystal structure is very interesting, stabilized by intermolecular bifurcated N—H...S (non bonding distance of 3.353 (2) Å and bond angle of 170 (2)°) and N—H...O (non bonding distance of 2.940 (2) Å and bond angle of 162 (2)°) hydrogen bonds forming centrosymmetric tetramers extending along the *b* axis.

Experimental

The title compound (I) was synthesized according to a previous report (Otaño-Sánchez *et al.*, 2001), by converting furoyl chloride into furoyl isothiocyanate and then condensing with 2-aminopyridine. The resulting solid product was crystallized from ethanol yielding X-ray quality single crystals (m.p 150–151 °C). Elemental analysis (%) for C₁₁H₉N₃O₂S calculated: C 53.44, H 3.64, N 17.00, S 12.96; found: C 53.50, H 3.46, N 16.99, S 12.58.

Refinement

H atoms on the C atoms were positioned geometrically with C—H = 0.93–0.97 Å and constrained to ride on their parent atoms with $U_{\text{iso}}(\text{H})=1.2U_{\text{eq}}(\text{parent atom})$.

Figures

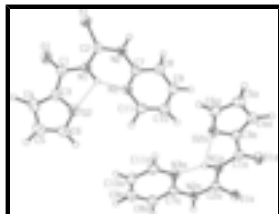


Fig. 1. The molecular structure of the title compound. Displacement ellipsoids are drawn at the 50% probability level. The intramolecular N—H···O hydrogen bond is shown as a dashed line.

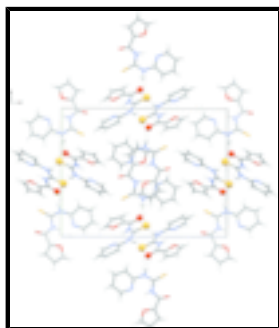


Fig. 2. View of the crystal packing of the title compound. Intermolecular hydrogen bonds are shown as dashed lines.

N-(2-Furoyl)-*N'*-(2-pyridyl)thiourea

Crystal data

$C_{11}H_9N_3O_2S$

$M_r = 247.27$

Monoclinic, $P2_1/c$

Hall symbol: -P 2ybc

$a = 6.9510$ (1) Å

$b = 15.7000$ (4) Å

$c = 20.2700$ (6) Å

$\beta = 90.284$ (2)°

$V = 2212.05$ (9) Å³

$Z = 8$

$F_{000} = 1024$

$D_x = 1.485$ Mg m⁻³

Mo $K\alpha$ radiation

$\lambda = 0.71073$ Å

Cell parameters from 13181 reflections

$\theta = 2.9$ – 26.0 °

$\mu = 0.29$ mm⁻¹

$T = 150$ K

Block, colorless

$0.12 \times 0.08 \times 0.06$ mm

Data collection

Enraf–Nonius KappaCCD
diffractometer

3574 reflections with $I > 2\sigma(I)$

Radiation source: fine-focus sealed tube Enraf Nonius FR590

$R_{int} = 0.060$

Monochromator: horizontally mounted graphite crystal

$\theta_{max} = 26.0$ °

ϕ scans and ω scans with κ offsets

$\theta_{min} = 2.9$ °

Absorption correction: none

$h = -8 \rightarrow 8$

22281 measured reflections

$k = -19 \rightarrow 18$

4337 independent reflections

$l = -24 \rightarrow 24$

Refinement

Refinement on F^2

H atoms treated by a mixture of independent and constrained refinement

Least-squares matrix: full

$$w = 1/[\sigma^2(F_o^2) + (0.0699P)^2 + 0.3338P]$$

$$R[F^2 > 2\sigma(F^2)] = 0.042$$

where $P = (F_o^2 + 2F_c^2)/3$

$$wR(F^2) = 0.122$$

$$(\Delta/\sigma)_{\max} = 0.001$$

$$S = 1.10$$

$$\Delta\rho_{\max} = 0.45 \text{ e } \text{\AA}^{-3}$$

4337 reflections

$$\Delta\rho_{\min} = -0.46 \text{ e } \text{\AA}^{-3}$$

323 parameters

Extinction correction: none

Special details

Geometry. All e.s.d.'s (except the e.s.d. in the dihedral angle between two l.s. planes) are estimated using the full covariance matrix. The cell e.s.d.'s are taken into account individually in the estimation of e.s.d.'s in distances, angles and torsion angles; correlations between e.s.d.'s in cell parameters are only used when they are defined by crystal symmetry. An approximate (isotropic) treatment of cell e.s.d.'s is used for estimating e.s.d.'s involving l.s. planes.

Fractional atomic coordinates and isotropic or equivalent isotropic displacement parameters (\AA^2)

| | <i>x</i> | <i>y</i> | <i>z</i> | $U_{\text{iso}}^*/U_{\text{eq}}$ |
|------|---------------|---------------|---------------|----------------------------------|
| S1A | 0.26900 (7) | 0.58701 (3) | -0.01361 (2) | 0.03185 (16) |
| S1 | 0.86024 (7) | 0.20621 (3) | -0.13099 (2) | 0.03742 (17) |
| N1A | 0.0427 (2) | 0.55696 (11) | 0.09207 (8) | 0.0285 (4) |
| O1A | -0.12681 (18) | 0.64878 (9) | 0.02319 (7) | 0.0327 (3) |
| O2 | 0.7008 (2) | -0.07818 (9) | 0.00044 (7) | 0.0379 (4) |
| N3 | 0.8621 (2) | 0.08935 (10) | 0.07607 (8) | 0.0313 (4) |
| N2A | 0.3235 (2) | 0.48042 (10) | 0.08445 (8) | 0.0292 (4) |
| N1 | 0.7790 (2) | 0.07419 (10) | -0.04921 (9) | 0.0297 (4) |
| O2A | -0.23343 (19) | 0.56744 (9) | 0.18216 (7) | 0.0370 (3) |
| N2 | 0.8903 (2) | 0.19839 (11) | -0.00248 (8) | 0.0278 (4) |
| C3 | 0.6597 (3) | -0.06607 (12) | -0.06512 (10) | 0.0311 (4) |
| C2A | 0.2051 (2) | 0.53986 (12) | 0.05684 (9) | 0.0268 (4) |
| C1 | 0.6980 (3) | 0.01830 (13) | -0.09411 (10) | 0.0330 (4) |
| C11 | 0.8702 (3) | 0.06331 (14) | 0.13915 (10) | 0.0370 (5) |
| H11 | 0.8452 | 0.0063 | 0.1483 | 0.044* |
| N3A | 0.1495 (2) | 0.44154 (11) | 0.17897 (8) | 0.0316 (4) |
| C1A | -0.1108 (3) | 0.60931 (12) | 0.07437 (9) | 0.0277 (4) |
| C11A | 0.1415 (3) | 0.40025 (13) | 0.23715 (10) | 0.0358 (5) |
| H11A | 0.0287 | 0.4035 | 0.2615 | 0.043* |
| C7A | 0.3113 (3) | 0.43617 (12) | 0.14412 (10) | 0.0294 (4) |
| C7 | 0.8961 (2) | 0.17098 (12) | 0.06335 (9) | 0.0270 (4) |
| O1 | 0.6582 (3) | 0.03377 (10) | -0.15091 (8) | 0.0527 (4) |
| C8 | 0.9405 (3) | 0.23029 (14) | 0.11254 (10) | 0.0340 (4) |
| H8 | 0.9641 | 0.2871 | 0.1022 | 0.041* |
| C3A | -0.2598 (3) | 0.61301 (12) | 0.12527 (9) | 0.0290 (4) |

supplementary materials

| | | | | |
|------|-------------|---------------|---------------|------------|
| C6A | -0.3910 (3) | 0.58333 (14) | 0.22036 (11) | 0.0404 (5) |
| H6A | -0.4116 | 0.5604 | 0.262 | 0.048* |
| C10A | 0.2925 (3) | 0.35352 (14) | 0.26215 (11) | 0.0411 (5) |
| H10A | 0.2823 | 0.3257 | 0.3025 | 0.049* |
| C4A | -0.4268 (3) | 0.65642 (12) | 0.12727 (10) | 0.0312 (4) |
| H4A | -0.4767 | 0.6921 | 0.0948 | 0.037* |
| C6 | 0.6596 (3) | -0.16117 (14) | 0.01396 (12) | 0.0418 (5) |
| H6 | 0.6744 | -0.1867 | 0.0551 | 0.05* |
| C9 | 0.9482 (3) | 0.20191 (14) | 0.17660 (11) | 0.0401 (5) |
| H9 | 0.9766 | 0.2398 | 0.2105 | 0.048* |
| C2 | 0.8401 (2) | 0.15650 (12) | -0.05889 (9) | 0.0275 (4) |
| C5A | -0.5112 (3) | 0.63660 (14) | 0.18931 (11) | 0.0368 (5) |
| H5A | -0.6279 | 0.6569 | 0.2052 | 0.044* |
| C10 | 0.9135 (3) | 0.11655 (15) | 0.19077 (10) | 0.0389 (5) |
| H10 | 0.9195 | 0.0963 | 0.2338 | 0.047* |
| C9A | 0.4598 (3) | 0.34887 (15) | 0.22583 (11) | 0.0448 (5) |
| H9A | 0.5645 | 0.3182 | 0.2418 | 0.054* |
| C4 | 0.5942 (3) | -0.13956 (14) | -0.09150 (12) | 0.0410 (5) |
| H4 | 0.5561 | -0.1485 | -0.135 | 0.049* |
| C8A | 0.4710 (3) | 0.38987 (14) | 0.16572 (10) | 0.0379 (5) |
| H8A | 0.5818 | 0.3867 | 0.1403 | 0.045* |
| C5 | 0.5951 (3) | -0.20049 (14) | -0.03991 (12) | 0.0410 (5) |
| H5 | 0.5577 | -0.2572 | -0.0431 | 0.049* |
| H2A | 0.425 (3) | 0.4683 (14) | 0.0623 (11) | 0.037 (6)* |
| H2 | 0.934 (3) | 0.2477 (17) | -0.0082 (12) | 0.044 (7)* |
| H1A | 0.024 (3) | 0.5257 (16) | 0.1268 (12) | 0.043 (6)* |
| H1 | 0.796 (3) | 0.0567 (15) | -0.0081 (12) | 0.041 (6)* |

Atomic displacement parameters (\AA^2)

| | U^{11} | U^{22} | U^{33} | U^{12} | U^{13} | U^{23} |
|------|-------------|-------------|-------------|--------------|--------------|-------------|
| S1A | 0.0344 (3) | 0.0315 (3) | 0.0297 (3) | 0.00331 (19) | 0.00427 (19) | 0.0052 (2) |
| S1 | 0.0482 (3) | 0.0361 (3) | 0.0280 (3) | -0.0017 (2) | 0.0017 (2) | 0.0040 (2) |
| N1A | 0.0284 (8) | 0.0290 (9) | 0.0281 (9) | 0.0000 (6) | 0.0010 (6) | 0.0050 (7) |
| O1A | 0.0311 (7) | 0.0331 (7) | 0.0338 (8) | -0.0008 (6) | -0.0009 (5) | 0.0078 (6) |
| O2 | 0.0430 (8) | 0.0330 (8) | 0.0377 (9) | -0.0026 (6) | 0.0002 (6) | 0.0033 (6) |
| N3 | 0.0331 (8) | 0.0301 (9) | 0.0308 (9) | -0.0014 (7) | -0.0010 (6) | 0.0036 (7) |
| N2A | 0.0291 (8) | 0.0297 (9) | 0.0287 (9) | 0.0039 (7) | 0.0026 (6) | 0.0016 (7) |
| N1 | 0.0338 (9) | 0.0277 (9) | 0.0277 (9) | 0.0000 (6) | -0.0026 (7) | 0.0006 (7) |
| O2A | 0.0383 (8) | 0.0430 (9) | 0.0298 (8) | 0.0064 (6) | 0.0011 (6) | 0.0052 (6) |
| N2 | 0.0289 (8) | 0.0251 (9) | 0.0294 (9) | -0.0025 (7) | 0.0005 (6) | 0.0012 (7) |
| C3 | 0.0282 (9) | 0.0312 (10) | 0.0340 (11) | 0.0029 (8) | -0.0028 (7) | -0.0032 (8) |
| C2A | 0.0285 (9) | 0.0236 (10) | 0.0282 (10) | -0.0023 (7) | -0.0014 (7) | -0.0019 (7) |
| C1 | 0.0354 (10) | 0.0309 (11) | 0.0327 (12) | 0.0022 (8) | -0.0039 (8) | -0.0034 (8) |
| C11 | 0.0377 (11) | 0.0383 (12) | 0.0351 (12) | 0.0001 (9) | -0.0003 (8) | 0.0087 (9) |
| N3A | 0.0361 (9) | 0.0301 (9) | 0.0285 (9) | -0.0011 (7) | 0.0021 (6) | 0.0014 (7) |
| C1A | 0.0275 (9) | 0.0254 (10) | 0.0302 (11) | -0.0045 (7) | -0.0026 (7) | 0.0012 (8) |
| C11A | 0.0466 (12) | 0.0326 (11) | 0.0283 (11) | -0.0042 (9) | 0.0026 (8) | 0.0012 (8) |

| | | | | | | |
|------|-------------|-------------|-------------|-------------|--------------|--------------|
| C7A | 0.0359 (10) | 0.0242 (9) | 0.0280 (10) | -0.0011 (8) | -0.0016 (8) | 0.0002 (8) |
| C7 | 0.0216 (8) | 0.0302 (10) | 0.0293 (10) | 0.0009 (7) | 0.0011 (7) | 0.0023 (8) |
| O1 | 0.0830 (12) | 0.0382 (9) | 0.0368 (9) | -0.0051 (8) | -0.0204 (8) | -0.0002 (7) |
| C8 | 0.0349 (10) | 0.0325 (11) | 0.0344 (11) | -0.0032 (8) | -0.0006 (8) | -0.0009 (9) |
| C3A | 0.0313 (10) | 0.0280 (10) | 0.0277 (10) | -0.0029 (8) | -0.0026 (7) | 0.0016 (8) |
| C6A | 0.0450 (12) | 0.0450 (13) | 0.0312 (12) | -0.0007 (9) | 0.0083 (9) | -0.0009 (9) |
| C10A | 0.0553 (13) | 0.0387 (12) | 0.0294 (11) | 0.0014 (10) | -0.0013 (9) | 0.0083 (9) |
| C4A | 0.0301 (10) | 0.0285 (10) | 0.0349 (11) | -0.0014 (8) | -0.0021 (7) | 0.0028 (8) |
| C6 | 0.0418 (12) | 0.0326 (12) | 0.0510 (14) | -0.0034 (9) | 0.0031 (9) | 0.0079 (10) |
| C9 | 0.0415 (11) | 0.0460 (13) | 0.0326 (12) | 0.0006 (9) | -0.0045 (8) | -0.0061 (10) |
| C2 | 0.0238 (8) | 0.0273 (10) | 0.0314 (11) | 0.0044 (7) | 0.0018 (7) | -0.0007 (8) |
| C5A | 0.0322 (10) | 0.0382 (12) | 0.0401 (12) | -0.0015 (9) | 0.0065 (8) | -0.0052 (9) |
| C10 | 0.0368 (11) | 0.0523 (14) | 0.0276 (11) | 0.0016 (9) | -0.0003 (8) | 0.0046 (10) |
| C9A | 0.0500 (13) | 0.0462 (13) | 0.0383 (13) | 0.0116 (10) | -0.0053 (10) | 0.0099 (10) |
| C4 | 0.0341 (11) | 0.0399 (12) | 0.0489 (14) | 0.0018 (9) | -0.0076 (9) | -0.0103 (10) |
| C8A | 0.0394 (11) | 0.0395 (12) | 0.0348 (12) | 0.0068 (9) | 0.0004 (8) | 0.0040 (9) |
| C5 | 0.0323 (11) | 0.0302 (11) | 0.0604 (15) | -0.0014 (8) | -0.0008 (9) | 0.0028 (10) |

Geometric parameters (Å, °)

| | | | |
|-------------|-------------|-----------|-----------|
| S1A—C2A | 1.6705 (19) | N3A—C11A | 1.347 (3) |
| S1—C2 | 1.6633 (19) | C1A—C3A | 1.467 (3) |
| N1A—C2A | 1.365 (2) | C11A—C10A | 1.375 (3) |
| N1A—C1A | 1.393 (2) | C11A—H11A | 0.93 |
| N1A—H1A | 0.87 (2) | C7A—C8A | 1.395 (3) |
| O1A—C1A | 1.213 (2) | C7—C8 | 1.398 (3) |
| O2—C6 | 1.362 (3) | C8—C9 | 1.373 (3) |
| O2—C3 | 1.371 (2) | C8—H8 | 0.93 |
| N3—C7 | 1.329 (2) | C3A—C4A | 1.346 (3) |
| N3—C11 | 1.343 (3) | C6A—C5A | 1.338 (3) |
| N2A—C2A | 1.363 (2) | C6A—H6A | 0.93 |
| N2A—C7A | 1.398 (3) | C10A—C9A | 1.381 (3) |
| N2A—H2A | 0.86 (2) | C10A—H10A | 0.93 |
| N1—C2 | 1.375 (3) | C4A—C5A | 1.425 (3) |
| N1—C1 | 1.382 (2) | C4A—H4A | 0.93 |
| N1—H1 | 0.89 (2) | C6—C5 | 1.330 (3) |
| O2A—C6A | 1.367 (3) | C6—H6 | 0.93 |
| O2A—C3A | 1.369 (2) | C9—C10 | 1.392 (3) |
| N2—C2 | 1.363 (2) | C9—H9 | 0.93 |
| N2—C7 | 1.402 (2) | C5A—H5A | 0.93 |
| N2—H2 | 0.84 (3) | C10—H10 | 0.93 |
| C3—C4 | 1.350 (3) | C9A—C8A | 1.381 (3) |
| C3—C1 | 1.474 (3) | C9A—H9A | 0.93 |
| C1—O1 | 1.207 (2) | C4—C5 | 1.417 (3) |
| C11—C10 | 1.371 (3) | C4—H4 | 0.93 |
| C11—H11 | 0.93 | C8A—H8A | 0.93 |
| N3A—C7A | 1.334 (2) | C5—H5 | 0.93 |
| C2A—N1A—C1A | 128.01 (17) | C9—C8—H8 | 121.1 |
| C2A—N1A—H1A | 116.0 (15) | C7—C8—H8 | 121.1 |

supplementary materials

| | | | |
|-----------------|--------------|-------------------|--------------|
| C1A—N1A—H1A | 115.3 (15) | C4A—C3A—O2A | 110.57 (17) |
| C6—O2—C3 | 106.52 (16) | C4A—C3A—C1A | 130.76 (18) |
| C7—N3—C11 | 118.14 (18) | O2A—C3A—C1A | 118.66 (16) |
| C2A—N2A—C7A | 131.03 (17) | C5A—C6A—O2A | 110.37 (19) |
| C2A—N2A—H2A | 115.6 (15) | C5A—C6A—H6A | 124.8 |
| C7A—N2A—H2A | 113.4 (15) | O2A—C6A—H6A | 124.8 |
| C2—N1—C1 | 128.90 (18) | C11A—C10A—C9A | 118.3 (2) |
| C2—N1—H1 | 112.8 (15) | C11A—C10A—H10A | 120.8 |
| C1—N1—H1 | 118.3 (15) | C9A—C10A—H10A | 120.8 |
| C6A—O2A—C3A | 106.10 (15) | C3A—C4A—C5A | 105.96 (18) |
| C2—N2—C7 | 131.01 (17) | C3A—C4A—H4A | 127 |
| C2—N2—H2 | 114.8 (16) | C5A—C4A—H4A | 127 |
| C7—N2—H2 | 114.0 (16) | C5—C6—O2 | 110.4 (2) |
| C4—C3—O2 | 109.50 (18) | C5—C6—H6 | 124.8 |
| C4—C3—C1 | 132.2 (2) | O2—C6—H6 | 124.8 |
| O2—C3—C1 | 118.28 (17) | C8—C9—C10 | 120.1 (2) |
| N2A—C2A—N1A | 114.79 (17) | C8—C9—H9 | 119.9 |
| N2A—C2A—S1A | 119.45 (14) | C10—C9—H9 | 119.9 |
| N1A—C2A—S1A | 125.73 (14) | N2—C2—N1 | 114.32 (17) |
| O1—C1—N1 | 126.22 (19) | N2—C2—S1 | 119.24 (15) |
| O1—C1—C3 | 121.33 (18) | N1—C2—S1 | 126.44 (15) |
| N1—C1—C3 | 112.44 (17) | C6A—C5A—C4A | 107.00 (18) |
| N3—C11—C10 | 123.3 (2) | C6A—C5A—H5A | 126.5 |
| N3—C11—H11 | 118.4 | C4A—C5A—H5A | 126.5 |
| C10—C11—H11 | 118.4 | C11—C10—C9 | 117.83 (19) |
| C7A—N3A—C11A | 118.13 (17) | C11—C10—H10 | 121.1 |
| O1A—C1A—N1A | 126.07 (17) | C9—C10—H10 | 121.1 |
| O1A—C1A—C3A | 121.29 (17) | C10A—C9A—C8A | 119.8 (2) |
| N1A—C1A—C3A | 112.65 (16) | C10A—C9A—H9A | 120.1 |
| N3A—C11A—C10A | 123.00 (19) | C8A—C9A—H9A | 120.1 |
| N3A—C11A—H11A | 118.5 | C3—C4—C5 | 106.5 (2) |
| C10A—C11A—H11A | 118.5 | C3—C4—H4 | 126.7 |
| N3A—C7A—C8A | 122.58 (18) | C5—C4—H4 | 126.7 |
| N3A—C7A—N2A | 118.80 (17) | C9A—C8A—C7A | 118.12 (19) |
| C8A—C7A—N2A | 118.60 (17) | C9A—C8A—H8A | 120.9 |
| N3—C7—C8 | 122.89 (18) | C7A—C8A—H8A | 120.9 |
| N3—C7—N2 | 118.45 (17) | C6—C5—C4 | 107.01 (19) |
| C8—C7—N2 | 118.65 (17) | C6—C5—H5 | 126.5 |
| C9—C8—C7 | 117.75 (19) | C4—C5—H5 | 126.5 |
| C6—O2—C3—C4 | 0.1 (2) | C6A—O2A—C3A—C1A | 179.28 (17) |
| C6—O2—C3—C1 | -177.81 (17) | O1A—C1A—C3A—C4A | -0.9 (3) |
| C7A—N2A—C2A—N1A | -2.9 (3) | N1A—C1A—C3A—C4A | 179.17 (19) |
| C7A—N2A—C2A—S1A | 175.31 (16) | O1A—C1A—C3A—O2A | -179.68 (17) |
| C1A—N1A—C2A—N2A | -174.81 (17) | N1A—C1A—C3A—O2A | 0.4 (2) |
| C1A—N1A—C2A—S1A | 7.1 (3) | C3A—O2A—C6A—C5A | -0.2 (2) |
| C2—N1—C1—O1 | -3.4 (3) | N3A—C11A—C10A—C9A | 0.0 (3) |
| C2—N1—C1—C3 | 177.41 (17) | O2A—C3A—C4A—C5A | -0.3 (2) |
| C4—C3—C1—O1 | 5.4 (3) | C1A—C3A—C4A—C5A | -179.11 (19) |
| O2—C3—C1—O1 | -177.24 (19) | C3—O2—C6—C5 | -0.1 (2) |

| | | | |
|-------------------|--------------|-------------------|--------------|
| C4—C3—C1—N1 | -175.4 (2) | C7—C8—C9—C10 | 0.4 (3) |
| O2—C3—C1—N1 | 2.0 (2) | C7—N2—C2—N1 | 2.3 (3) |
| C7—N3—C11—C10 | -0.6 (3) | C7—N2—C2—S1 | -176.68 (14) |
| C2A—N1A—C1A—O1A | 0.7 (3) | C1—N1—C2—N2 | 171.78 (17) |
| C2A—N1A—C1A—C3A | -179.38 (17) | C1—N1—C2—S1 | -9.3 (3) |
| C7A—N3A—C11A—C10A | 0.4 (3) | O2A—C6A—C5A—C4A | 0.0 (2) |
| C11A—N3A—C7A—C8A | -0.1 (3) | C3A—C4A—C5A—C6A | 0.1 (2) |
| C11A—N3A—C7A—N2A | -178.41 (17) | N3—C11—C10—C9 | 0.8 (3) |
| C2A—N2A—C7A—N3A | 9.8 (3) | C8—C9—C10—C11 | -0.7 (3) |
| C2A—N2A—C7A—C8A | -168.59 (19) | C11A—C10A—C9A—C8A | -0.7 (4) |
| C11—N3—C7—C8 | 0.3 (3) | O2—C3—C4—C5 | -0.2 (2) |
| C11—N3—C7—N2 | 179.18 (16) | C1—C3—C4—C5 | 177.4 (2) |
| C2—N2—C7—N3 | 5.8 (3) | C10A—C9A—C8A—C7A | 0.9 (3) |
| C2—N2—C7—C8 | -175.35 (17) | N3A—C7A—C8A—C9A | -0.5 (3) |
| N3—C7—C8—C9 | -0.2 (3) | N2A—C7A—C8A—C9A | 177.75 (19) |
| N2—C7—C8—C9 | -179.06 (16) | O2—C6—C5—C4 | 0.0 (2) |
| C6A—O2A—C3A—C4A | 0.3 (2) | C3—C4—C5—C6 | 0.1 (2) |

Hydrogen-bond geometry (\AA , $^\circ$)

| <i>D</i> —H \cdots <i>A</i> | <i>D</i> —H | H \cdots <i>A</i> | <i>D</i> \cdots <i>A</i> | <i>D</i> —H \cdots <i>A</i> |
|-----------------------------------|-------------|---------------------|----------------------------|-------------------------------|
| N1—H1 \cdots O2 | 0.89 (2) | 2.23 (2) | 2.653 (2) | 109.3 (18) |
| N1—H1 \cdots N3 | 0.89 (2) | 1.84 (2) | 2.612 (2) | 145 (2) |
| N1A—H1A \cdots O2A | 0.87 (2) | 2.22 (2) | 2.661 (2) | 111.6 (18) |
| N1A—H1A \cdots N3A | 0.87 (2) | 1.90 (2) | 2.632 (2) | 141 (2) |
| N2—H2 \cdots O1A ⁱ | 0.84 (3) | 2.13 (2) | 2.940 (2) | 162 (2) |
| N2A—H2A \cdots S1A ⁱ | 0.86 (2) | 2.51 (2) | 3.3530 (15) | 170 (2) |

Symmetry codes: (i) $-x+1, -y+1, -z$.

Fig. 1

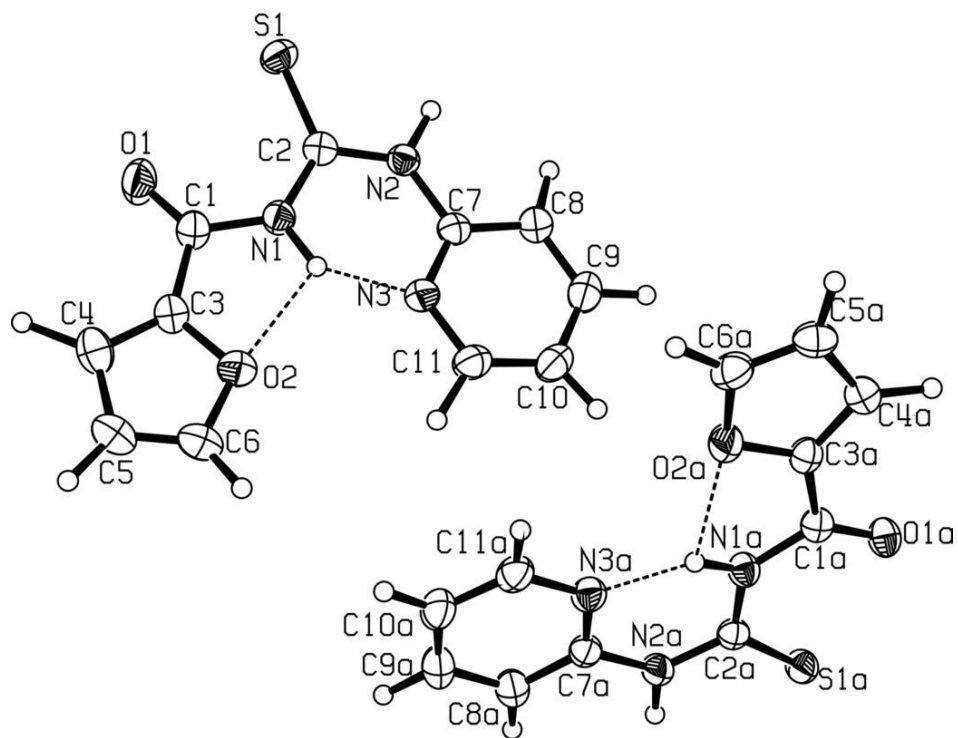


Fig. 2

